

Innovate

Multi-tasking Like Never Before

Brought To You by John Winter, Product Specialist Turning, Sandvik Coromant | Mar 20, 2018

In 2016 Sandvik Coromant launched the new all-directional PrimeTurning method and CoroTurn® Prime tools which allow you to do your existing running operations in a much more efficient way, across the X and Z axis. In 2017 they launched a new range of CoroTurn Prime multi-task and axial type tool holders to help machine shops implement the new PrimeTurning methodology. This introduction allows users to maximize the benefits of PrimeTurning on multi-task turn-mill centers and vertical turning lathes (VTLs).

Both the CoroTurn® Prime A and B type inserts can be mounted together on Twin tool holders, allowing manufacturers to undertake roughing with a B-type insert before switching to finishing with an A-type insert.

"Modern multi-task machines are intended for the complete machining of components but typically have a slow tool changing time, often around 15-20 seconds," says Håkan Ericksson, Product Manager General Turning at Sandvik Coromant. "As a result, the new Twin holder will save customers a considerable amount of time when changing tools."

As a further advantage, B-axis machining on multi-task machines permits the operator to program the angle of the tool in precise increments. When the machine cuts using its B-axis, a lot of accessibility is created using neutral holders. In combination with streamlined operations, this delivers the potential for huge time saving and productivity increases to help manufacturers reduce tooling inventories and achieve competitive gains.

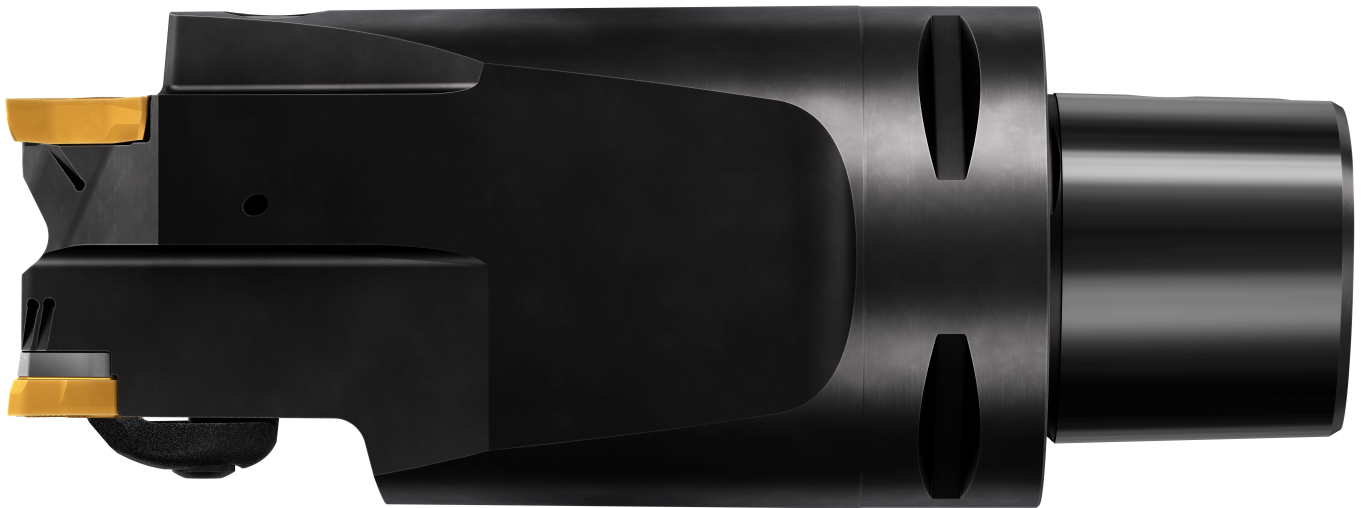
Six new multi-task tool holders have been introduced, which are mounted at a 45° angle for B-axis machining and can be used with either CoroTurn® Prime A-type or B-type inserts. Options for multi-task machines include four tool holders (one-insert only) and two Twin tool holders (two inserts). The

CoroTurn Prime Twin tool holder is available for use with Coromant Capto® C5 – C8 size.

A range of axial tool holders for vertical turning lathes is also part of the range, which means that Sandvik Coromant now has a complete offer for PrimeTurning: axial, radial and multi-task tool holders. In total, eight dedicated tool holders for axial mounting are being launched. This type of tool holder is compatible with most types of vertical lathes, and is available in Coromant Capto for use with either CoroTurn® Prime A-type or B-type inserts.

Although PrimeTurning is applicable to the entire general turning area, machine shops with large batch sizes (automotive) are set to benefit most, as will those machining large components (aerospace), where there is a need to reduce tool changes, set-up time and production stops.

Ultimately, the all-directional PrimeTurning method and CoroTurn® Prime tools will ensure that manufacturers can complete their turning operations in a much more efficient way. Compared with conventional turning, a 50-80% increase in productivity, along with 1.5–2 times more tool life, can be achieved.



Previously featured on Sandvik Coromant.

Find more information on CoroTurn® Prime and PrimeTurning™ on Sandvik Coromant.

www.mscdirect.com/betterMRO

Copyright ©2025 MSC Industrial Supply Co.