



Facility Safety

## Ergonomic Flooring vs. Floor Matting

Brought To You by Wearwell | Jul 31, 2018

In this competitive marketing place it's hard to make decisions on what would be the best anti-fatigue solution for your team. Do they need a mat or flooring?

**What's the difference?**

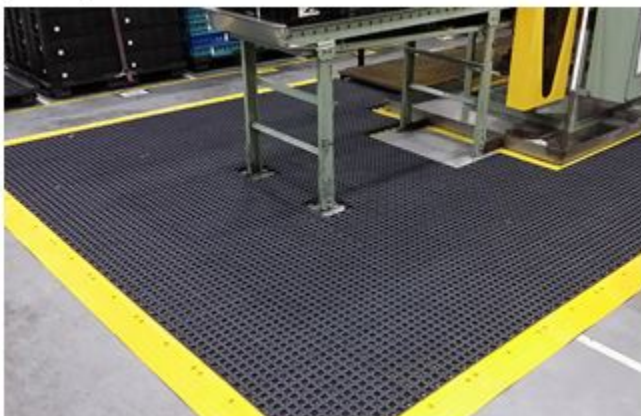
**Defining Flooring vs. Matting**

- Ergonomic Matting is an anti-fatigue solution designed to cover a single workstation or an assembly area.
- Ergonomic Flooring is an anti-fatigue solution that is modular. It has interlocking tiles that connect to cover larger areas.

Ready to decide? Hardly.

The important key factors as to whether you should choose flooring or matting is more importantly about the process and environment. What is the process of the job? Do your employees stand in one place at a single workstation or on a line, or do they move, pivot, walk from one place to another to do the process of the job? What is the environment? Is it dry, wet or oily? Are there debris involved, such as metal shavings?

Matting is great where a process calls for the employees to stand in one place for a long period of time. It comes in a variety of surface patterns and levels of rebound to fight fatigue.



Flooring has a lot more versatility. Since it's assembled with interlocking tiles, it can cover larger areas,

and can accommodate just about any geometric shape to fit even the most unique job process. It can be utilized in environments that are wet or oily, as it does not have the sponge material underneath.

It is available with or without holes, to facilitate drainage of fluids and debris. Flooring also offers fatigue-fighting properties as it elevates the standing worker above the unforgiving field of concrete.

Concrete can be slippery. Installing flooring can additionally help to reduce injury in the event of a slip. It protects floors and covers imperfections, and a single tile can be replaced instead of a whole floor, saving thousands in costly repairs. Walkways are defined easily, and there is even an option for color safety boards to give visual cues to change in the walking plane. The availability of color can contribute to safety, aesthetics and LEAN manufacturing initiatives like 5S (system for organizing spaces so work is performed efficiently, effectively, and safely).

The choice to utilize flooring or matting boils down to the application challenge to be solved. The greatest point is both are valuable in improving safety and productivity so your employees perform at their best and are in just as great of shape at the end as they are at the start of the day.



*For more information on products from Wearwell, please visit [MSCDirect.com](https://www.mscdirect.com).*

**[www.mscdirect.com/betterMRO](https://www.mscdirect.com/betterMRO)**

Copyright ©2025 MSC Industrial Supply Co.