

(super quick!)

Your Introduction to Visual Workplace

from Brady

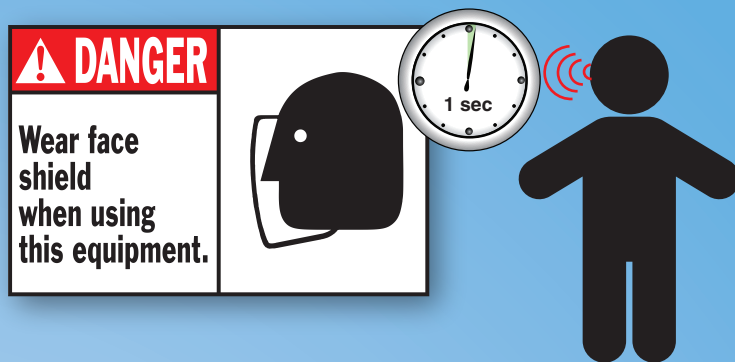
What is it?

Def • i • ni • tion

¹ Visual workplace is a lean manufacturing concept that emphasizes placing visuals with critical information at the point of use. *Also known as: Visual Factory, Visual Management*

What info should I post?

If it's critical information, it should be embedded in your physical workplace. That means right where your employees work – on their equipment, on the shelves, on the floors... anywhere they can see it at a glance for “just-in-time communication.”



What visuals should I use?

Signs, labels, placards, markers, displays... you name it! Visuals can be something as simple as a line, shape or color band – whatever employees can understand at a glance.

Why is this so important?

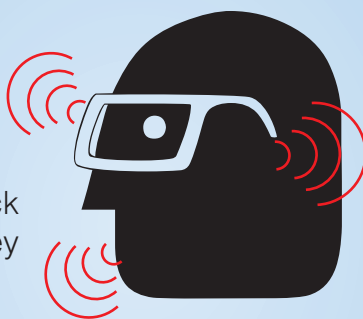
The short answer:

Visuals make sure every employee knows exactly what to do, all the time. That means better safety, and better productivity!

The long answer:

50%

or more of a facility's activities is oftentimes considered waste! Waste is primarily caused because employees lack information. If you post the info where they need it... you cut the waste!



75%

Research shows that people learn 75% of what they know visually, 13% through hearing, and 12% through smell, touch, and taste. Workplace visuals play a HUGE role in job training.

78million



baby boomers are expected to retire over the next 10-15 years. Visuals help less experienced employees learn faster and work more efficiently.



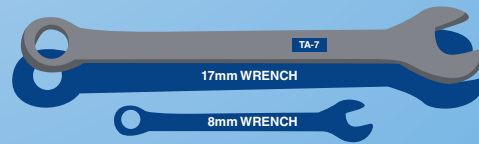
What are the benefits?

15% to 30%

Most companies see a 15-30% increase in productivity after effectively implementing a visual workplace.

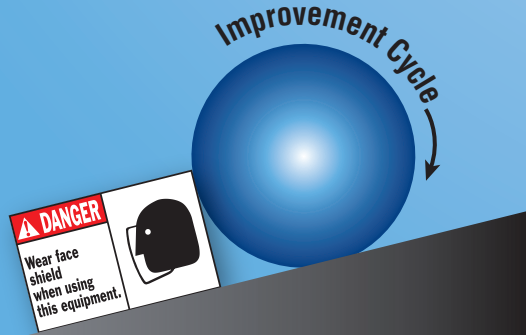
Creates operational stability:

Visuals reinforce the standards you've put in place, and make sure abnormalities are quickly spotted – creating a base of operational stability for your facility.



Sustains continuous improvement:

Visuals are a key sustaining force in Kaizen initiatives. They make sure improvements remain clearly visible, readily understood, and consistently adhered to... long after the Kaizen or rapid improvement event is over!



Learn more at
www.BradyID.com/visualworkplace